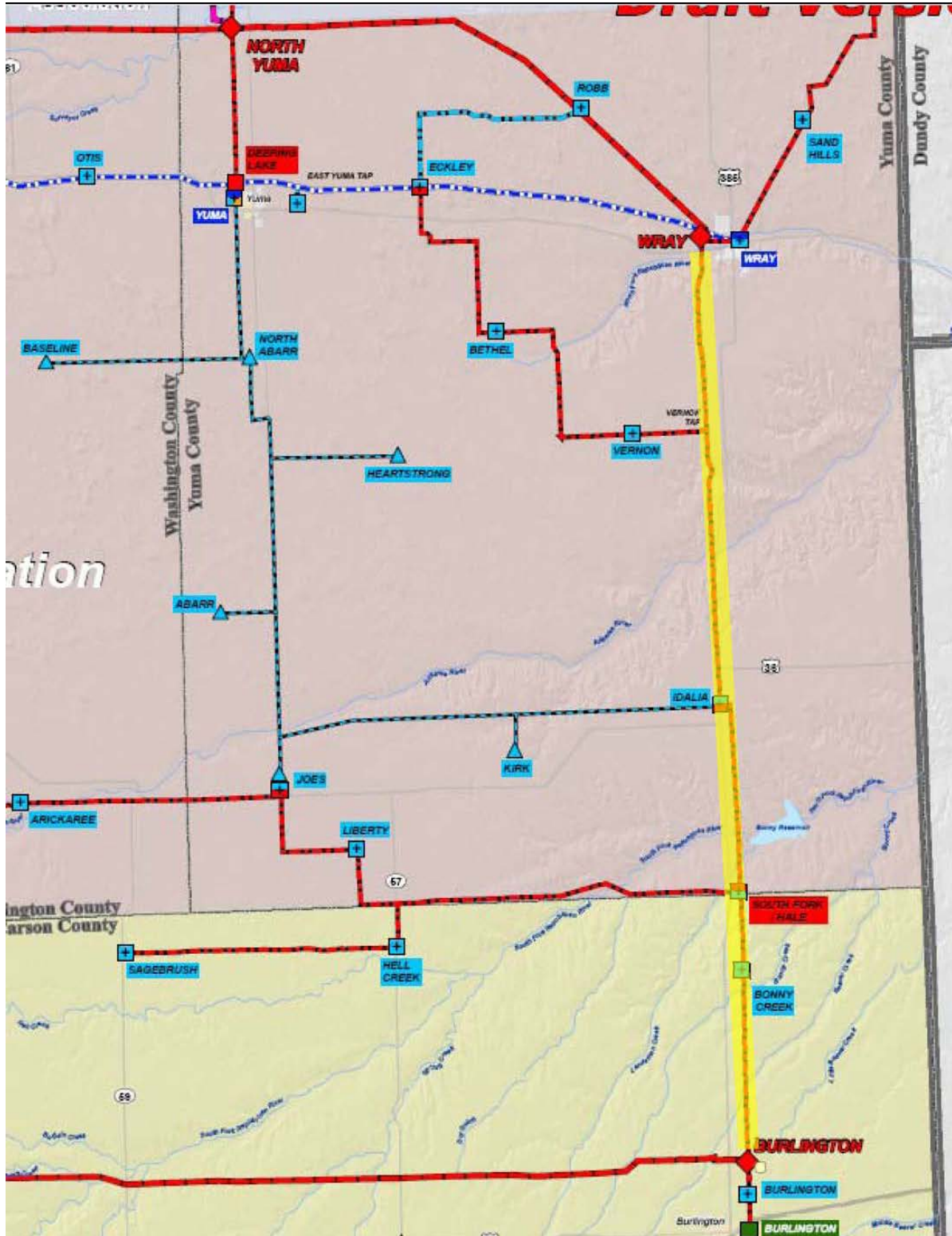


# Tri-State Generation and Transmission Association 2014-2023 Transmission Plan

## Burlington - Wray 230kV Line Project

<b>Project Sponsor:</b>	Tri-State Generation and Transmission Association
<b>Additional Project Participants:</b>	
<b>Project Description:</b>	Construct new 230kV line from the existing Burlington Substation to the existing Wray Substation.
Voltage Class:	230 kV
Facility Rating:	612 MVA
Point of Origin/Location:	Burlington, CO
Point of Termination:	Wray, CO
Intermediate Points:	
Length of Line (in Miles):	60.0
Type of Project:	Transmission Line
Development Status:	Under Construction
Routing:	
Subregional Planning Group:	CCPG
<b>Purpose of Project:</b>	Improve load-serving capability, remove generation operating restrictions, and support renewable resource development in eastern Colorado.
<b>Estimated Cost (in 2013 Dollars):</b>	\$40,265,000
<b>Schedule:</b>	
Construction Date:	2014
Planned In-Service Date:	2016
Regulatory Info:	CPUC: CPCN granted : COPUC-C11-0042
Regulatory Date:	
Permitting Info:	
Permitting Date:	
<b>Contact Information:</b>	Matthew Haag
Email	mhaag@tristategt.org
Phone	(303) 254-3159
Website Information	<a href="http://www.tristategt.org/transmissionPlanning/puc3627_TransmissionProjects.cfm">http://www.tristategt.org/transmissionPlanning/puc3627_TransmissionProjects.cfm</a>

*Burlington – Wray 230 kV Line Project*



**Figure 2: Burlington – Wray 230 kV Line Project Map**

The Burlington – Wray 230 kV Line Project is intended to increase reliability in the project area, remove restrictions on the Burlington area network resources, and increase the deliverability of Tri-State resources to Tri-State member loads. This will be accomplished by adding a new 230 kV line from the Burlington substation to the Wray substation. The existing Burlington – Bonny Creek – South Fork – Idalia – Vernon Tap – Wray 115 kV line is currently a limiting element on Tri-State’s system in Eastern Colorado. The existing line conductor, Hawk 477 ACSR, is rated for a maximum operating capacity of 704 amps which is further limited by other equipment (disconnect switches). The addition of the 230 kV line will add one new transmission line segment that will be constructed as a single circuit using 1272 MCM ACSR conductor with a maximum operating capacity of 1538 amps. This additional capacity will alleviate congestion in the Burlington area, increase reliability, and allow the potential development of renewable generation resources in the Burlington and Wray areas which currently have existing wind resources. This project is presently planned to be financed and constructed solely by Tri-State. The Commission granted a CPCN for this project on January 12, 2011 (Decision No. C11-0042; Docket No. 10A-906E).